



2022 TOURING

GTX[†] LIMITED 300

The standard for high-end touring performance.

KEY FEATURES

- Rotax 1630 ACE – 300 engine
- BRP Audio – premium system
- Full-color 7.8" wide display
- iDF – Intelligent Debris Free Pump System
- Direct-access front storage
- **Limited Package:**
 - USB port
 - Watercraft cover
 - Storage bin organizer
 - Knee pads
 - Depth finder
 - Exclusive coloration and more



- NEW **Premium** Metallic Sage
- NEW Liquid Titanium & Black

CAPACITY

Rider Capacity	3
Weight Capacity	600 lb/272 kg
Fuel Capacity	18.5 US gal/70 L
Glove Box	0.8 US gal/2.9 L
Front Bin	25.3 US gal/96 L
Storage Capacity - Total	26.1 US gal/98.9 L

DIMENSIONS

Length (bumper to bumper)	135.9"/345.1 cm
Width	49.4"/125.5 cm
Height	44.8"/114 cm

HULL

Type	ST3 Hull™
Material	Fiberglass

OTHER FEATURES

- Ergolock™ two-piece seat w/stepped design
- Seat strap
- iBR – Intelligent Brake & Reverse
- VTS™ - Variable Trim System
- Boarding ladder
- RF D.E.S.S.™ key**
- Watertight phone compartment
- LinQ® attachment system
- Knee pads
- Wide-angle mirrors
- Handle grips with palm rest
- Footwell carpets
- Large swim platform with carpet
- Tilt steering
- Ski tow eye

ROTAX® ENGINE

1630 ACE™ - 300

Model	GTX 300
Horsepower	300 hp
Intake System	Supercharged with external intercooler
Displacement	1,630 cc
Cooling	Closed-Loop Cooling System (CLCS)
Reverse System	Electronic iBR® *
Fuel Type	91 octane
Throttle System	iTC™ (Intelligent Throttle Control)
Exhaust System	D-Sea-Bel™ system

GAUGE

Type of Gauge	Large panoramic 7.8" wide LCD display	
Main Functions	<ul style="list-style-type: none"> • BRP Connect • Music • Weather • Bluetooth connectivity • Speedometer • RPM • Clock 	<ul style="list-style-type: none"> • VTS™ • Fuel consumption • Fuel autonomy • Water temperature • Depth finder • Speed statistics • Vehicle hours
iTC System - Mode	<ul style="list-style-type: none"> • Sport mode • ECO® mode 	<ul style="list-style-type: none"> • Slow mode • Speed regulator

WEIGHT

Dry Weight	849 lb/385 kg
------------	---------------

WARRANTY

BRP limited warranty covers the watercraft for one year.

*Electronic brake, neutral and reverse.
 **May not be available at the time of purchase. Please check with your dealer.





● NEW Liquid Titanium & Black

FEATURE HIGHLIGHTS



iDF – Intelligent Debris-Free Pump System

An innovative, industry-first system that allows you to free your pump of weeds and debris with intuitive handlebar-activated controls.



BRP Audio - Premium System

The industry's first manufacturer-installed truly waterproof Bluetooth[†] audio system.



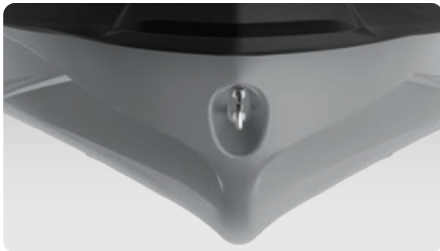
Full-Color 7.8" Wide Display

Full-color display with incredible visibility and a new level of functionality. Bluetooth and smartphone app integration provides music, weather, navigation and more.



ROTAX[®] 1630 ACE[™] - 300

The Rotax[®] 1630 ACE – 230 offers instant acceleration by way of a powerful supercharger, while the new Rotax[®] 1630 ACE[™] – 300 is the most powerful Rotax engine ever on a Sea-Doo.



ST3 Hull[™]

An innovative hull that sets the benchmark for rough water handling, stability, and offshore performance.



Swim Platform with Integrated LinQ[®] System

Exclusive quick-attach system on the largest swim platform in the industry allows for easy installation of storage accessories.

©2021 Bombardier Recreational Products Inc., (BRP). All rights reserved. ©, TM and the BRP logo are trademarks of Bombardier Recreational Products Inc. or its affiliates. Products are distributed in the USA by BRP US Inc. All product comparisons, industry and market claims refer to new sit-down PWC with 4-stroke engines. Watercraft performance may vary depending on, among other things, general conditions, ambient temperature, and altitude, riding ability and rider/passenger weight. Testing of competitive models done under identical conditions. Because of our ongoing commitment to product quality and innovation, BRP reserves the right at any time to discontinue or change specifications, price, design, features, models or equipment without incurring any obligation. †GTX is a trademark of Castrol Limited used under license. †Bluetooth is a registered trademark owned by Bluetooth SIG, Inc. and any use of such trademarks by BRP is under license. Printed in Canada.