

FISH PRO™ 170

A new perspective on sport fishing.

KEY FEATURES

- Garmin[†] ECHOMAP[†] Plus 62cv Fish Finder
- LinQ™ fishing cooler 51 L
- Extended rear platform with second LinQ™ attachment system
- NEW iDF Intelligent Debris Free Pump System
- 5 x fishing rod holder
- Ergolock™ fishing seat
- BRP Audio - premium system (optional)



NEW White & Gulfstream Blue

iDF/iTC/iBR/ST3/CLCS/ECO

CAPACITY

Rider Capacity	3
Weight Capacity	272 kg
Fuel Capacity	70 L
Glove Box	2.9 L
Front Bin	96 L
LinQ™ fishing cooler	51 L
Storage Capacity - Total	149.9 L

DIMENSIONS

Length (bumper to bumper)	373.4 cm
Width	125.5 cm
Height	115.1 cm

HULL

Type	ST3 Hull™
Material	Fiberglass

OTHER FEATURES

- NEW cupholder
- NEW front rod holder
- Watertight phone compartment
- iControl[®]
- Seat strap
- Trim tabs
- VTS™ (Variable Trim System)
- Boarding ladder
- Ski tow eye
- RF D.E.S.S.™ key
- LinQ™ attachment system
- Wide-angle mirrors
- Handlegrip with palm rests
- Footwell carpets
- Tilt steering

ROTAX® ENGINE

1630 ACE™ - 170

Intake System	Naturally aspirated
Displacement	1,630 cc
Cooling	Closed-Loop Cooling System (CLCS)
Reverse System	Electronic iBR**
Fuel Type	87 octane
Throttle System	iTC™ (Intelligent Throttle Control) system
Exhaust System	D-Sea-Bel™ system

GAUGE

Type of Gauge	7.6" wide digital display	
Main Functions	<ul style="list-style-type: none"> • Speedometer • RPM • Clock • VTS™ display • Fuel autonomy distance & time to empty 	<ul style="list-style-type: none"> • Water temperature • Vehicle hour display
iTC System - mode	<ul style="list-style-type: none"> • Sport mode • ECO® mode 	<ul style="list-style-type: none"> • Trolling mode (slow mode) • Speed regulator

WEIGHT

Dry Weight	389 kg
------------	--------

WARRANTY

BRP limited warranty covers the watercraft for two years.

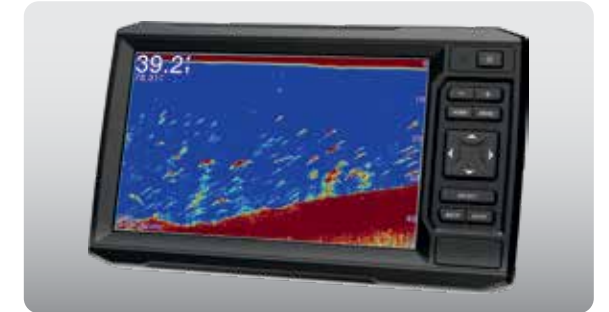
**Electronic brake, neutral and reverse.

FEATURE HIGHLIGHTS



NEW iDF Intelligent Debris Free Pump System

An innovative, industry-first system that allows you to free your pump of weeds and debris with intuitive handlebar-activated controls.



GARMIN® Echomap® Plus 62CV fish finder

A top-of-the-line navigation, charting and fish-finding system using CHIRP technology for high-definition images.



Extended rear platform with second LinQ™ attachment system

Adds 11.5 inches to the back of the watercraft to increase stability, space, and storage capability.



Angled gunwale footrests

Ensures ergonomic and secure posture while fishing from a side position.



LinQ™ fishing cooler & (5x) fishing rod holders

A spacious, quick-attach fishing cooler designed for easy access and equipped with numerous convenient features.



Trolling mode

Gives superior trolling control at low speeds without using the throttle—simply set, maintain and adjust as needed.